



## 73 Collywell Bay Road Seaton Sluice, Whitley Bay NE26 4RG

- Fantastic Coastal Location
- Good sized corner plot
  - Fitted Kitchen
- Partial Sea Views from First Floor
  - Shower Room
- Semi Detached House
  - 2 Reception Rooms
  - Ground Floor Cloaks/w.c
  - 3 Bedrooms
- Driveway/Garage/Gardens

**£265,000**





Conveniently situated in the charming area of Seaton Sluice, this delightful semi-detached house on Collywell Bay Road offers a perfect blend of comfort and coastal living, making it an ideal home for families seeking a seaside retreat.

Upon entering, you are welcomed by an inviting Entrance Porch that leads into a Reception Hallway. The ground floor features a convenient cloaks/w.c., enhancing the practicality of the layout. The lounge, positioned at the front of the house, is bathed in natural light and features sliding doors that open into a dining room with ample space for table & chairs.



The property is set on an excellent-sized corner plot, providing ample outdoor space for children to play or for gardening enthusiasts. From the first floor, you can enjoy partial sea views, a lovely reminder of the coastal location.

Seaton Sluice is renowned for its picturesque surroundings and family-friendly atmosphere. The property is conveniently located near local amenities, including shops and good schools, ensuring that all your daily needs are within easy reach. Additionally, the recently opened train station in Seaton Delaval offers direct access to Newcastle, making commuting a breeze.



Briefly comprising Entrance Porch, Ground Floor Cloaks/w.c. Reception Hallway, Lounge sliding doors to Dining Room, Fitted Kitchen, First Floor Landing, 3 Bedrooms and Shower Room. Externally Gardens to front, rear and side. Detached Garage with driveway.



## Entrance Porch

## Ground Floor Cloaks/w.c

## Reception Hallway

## Lounge

13'9 x 11'5

## Dining Room

10'5 x 9'6

## Kitchen

10'10 x 7'7

## First Floor Landing

## Bedroom One

11'10 x 11'9 inc robes

## Bedroom Two

11'3 x 11'6

## Bedroom Three

8'8 x 7'7

## Shower Room

7'10 x 7'9

## Externally

## Disclaimer

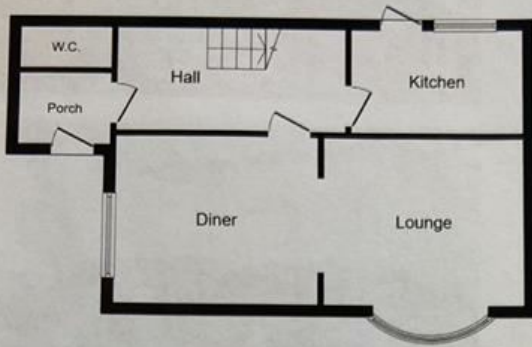
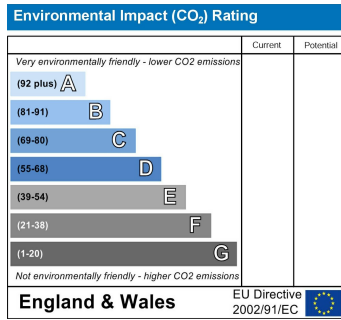
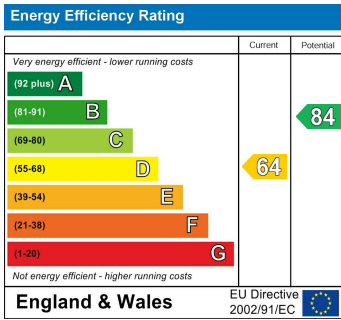
ML Estates Ltd endeavour to maintain accurate descriptions of properties in Virtual Tours, Brochures, Floor Plans and descriptions, however, these are intended only as a guide and purchasers must satisfy themselves by personal inspection. All rooms have been measured with electronic laser and are approximate measurements only. None of the services to the above property have been tested by ourselves, and we cannot guarantee that the installations described in the details are in perfect working order. ML Estates for themselves, the vendors or lessors, produce these brochures in good faith and are a guideline only. They do not constitute any part of a contract and are correct to the best of our knowledge at the time of going to press. Pictures may appear distorted due to enlargement and are not to be used to give an accurate reflection of size. All negotiations and payments are subject to contract. The Tenure of the property should be clarified by your legal representative prior to exchange of contracts.



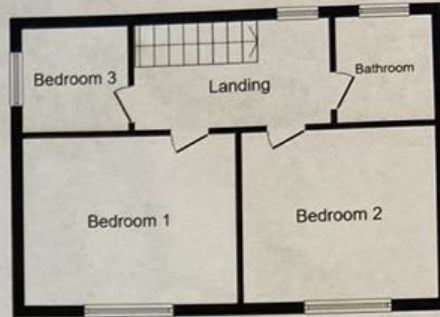




**Local Authority** Northumberland County Council  
**Council Tax Band** C  
**EPC Rating** D  
**Tenure** Freehold



Ground Floor



First Floor

**ML Estates Sales Office**

27 Avenue Road, Seaton Delaval, Tyne  
 And Wear, NE25 0DT

**Contact**

0191 237 60 60  
 sd@mlestates.co.uk  
 www.mlestates.co.uk/

Agents Note: Whilst every care has been taken to prepare these particulars, they are for guidance purposes only. All measurements are approximate and for general guidance purposes only and whilst every care has been taken to ensure accuracy, they should not be relied upon and potential buyers/tenants are advised to recheck the measurements.